

## **Lily Ave between Douglas St and Quadra St**

**March 11, 2019 To March 15, 2019**



The data presented here is for information purposes only and should not be considered authoritative for construction, geotechnical, engineering, navigational, legal, or other site-specific uses. The information shared is owned by the Transportation Division of the Engineering Department at the District of Saanich. Accuracy is not guaranteed.

Start Date: 11-Mar-19  
 Start Time: 0:12  
 Station ID: C0041-01

**Location 1: Lily Ave between Douglas St and Quadra St**  
**Note: Douglas St and Quadra St**

DATE:	March 11, 2019		March 12, 2019		March 13, 2019		March 14, 2019		March 15, 2019		WK AVG		WK AVG	HOURLY
	MON		TUE		WED		THURS		FRI				CH 1+2	%
Time:	EB	WB	EB	WB	EB	WB	EB	WB	EB	WB	EB	WB		
12-1 AM			0	3	2	2	3	4			2	3	5	0.4%
1-2 AM			1	0	1	1	0	0			1	0	1	0.1%
2-3 AM			1	1	0	1	0	0			0	1	1	0.1%
3-4 AM			1	1	1	1	0	1			1	1	2	0.1%
4-5 AM			0	3	2	0	2	1			1	1	3	0.2%
5-6 AM			3	2	2	4	2	3			2	3	5	0.4%
6-7 AM			12	10	18	12	15	5			15	9	24	1.8%
7-8 AM			44	17	56	25	44	22			48	21	69	5.3%
8-9 AM			79	41	83	44	87	26			83	37	120	9.2%
9-10 AM			49	36	33	31	38	31			40	33	73	5.6%
10-11 AM			26	25	42	26	37	22			35	24	59	4.5%
11-12 PM			39	35	35	31	50	39			41	35	76	5.8%
12-1 PM			33	42	38	38	43	45			38	42	80	6.1%
1-2 PM			46	25	41	35	38	38			42	33	74	5.7%
2-3 PM			43	45	46	42	49	51			46	46	92	7.0%
3-4 PM			47	67	59	55	63	56			56	59	116	8.8%
4-5 PM			60	47	73	59	63	67			65	58	123	9.4%
5-6 PM			50	63	51	64	33	51			45	59	104	8.0%
6-7 PM			43	45	41	51	32	36			39	44	83	6.3%
7-8 PM			29	26	29	32	36	35			31	31	62	4.8%
8-9 PM			12	30	21	30	30	37			21	32	53	4.1%
9-10 PM			30	22	22	21	16	26			23	23	46	3.5%
10-11 PM			14	9	13	16	6	8			11	11	22	1.7%
11-12 AM			4	7	5	12	8	8			6	9	15	1.1%
<b>LANES</b>			<b>666</b>	<b>602</b>	<b>714</b>	<b>633</b>	<b>695</b>	<b>612</b>			<b>692</b>	<b>616</b>	<b>1307</b>	<b>100.0%</b>
<b>TOTAL</b>			<b>1268</b>		<b>1347</b>		<b>1307</b>				<b>1310</b>			
	MON		TUE		WED		THURS		FRI	WK AVG				

PEAK HOUR					TOTAL VEHICALS-PEAK PERIODS		2 HOUR PEAK INTERVALS			
MAX. 7 - 9 am PEAK HOUR	120	⇒	9.2%	between 8-9 AM	572	⇒ 6 HR TOTAL	<b>2 HR AM (7 - 9 AM)</b>			
MAX. 7 - 11 am PEAK HOUR	120	⇒	9.2%	between 8-9 AM	416	⇒ 4 HR TOTAL	VEH / HR	VEH / 2HR	2 HR %	
							7-8 AM	69	189	14.5%
							8-9 AM	120		
MAX. 11 am - 1 pm PEAK HOUR	80	⇒	6.1%	between 12-1 PM	<b>24 HOUR FACTORS</b>					
MAX. 11 am - 3 pm PEAK HOUR	92	⇒	7.0%	between 2-3 PM						
MAX. 4 - 6 pm PEAK HOUR	123	⇒	9.4%	between 4-5 PM	2.28	⇒ 6-24 HR FACT.	<b>2 HR NOON (11 - 1 PM)</b>			
MAX. 3 - 6 pm PEAK HOUR	123	⇒	9.4%	between 4-5 PM	3.14	⇒ 4-24 HR FACT.	VEH / HR	VEH / 2HR	2 HR %	
							11-12 PM	76	156	11.9%
							12-1 PM	80		
							<b>2 HR PM (4 - 6 PM)</b>			
							VEH / HR	VEH / 2HR	2 HR %	
							4-5 PM	123	227	17.4%
							5-6 PM	104		

# Lily Ave between Douglas St and Quadra St

Westbound

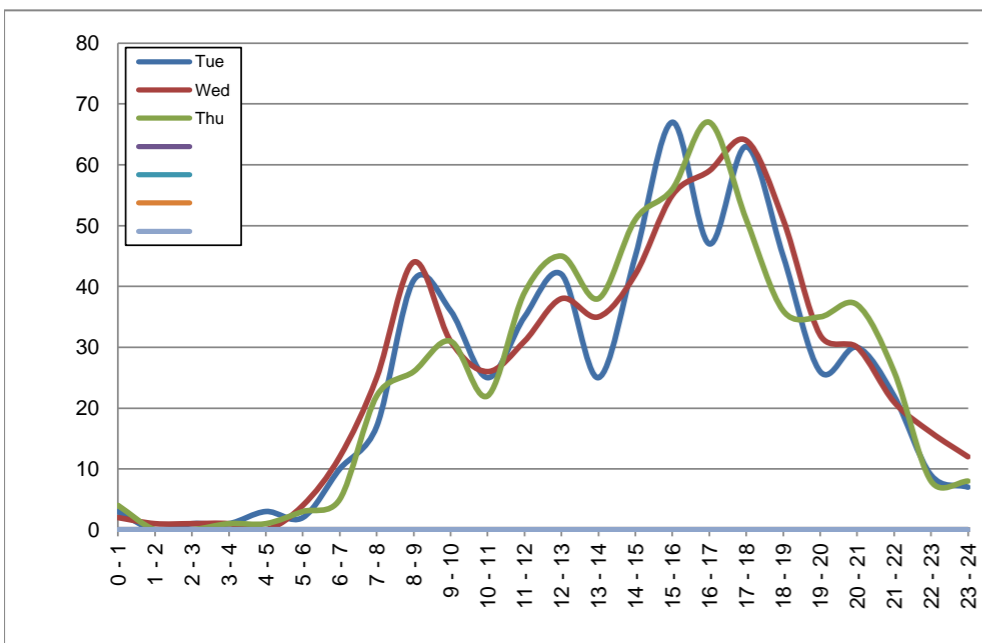
March 12, 2019 to March 14, 2019

## Hourly Volumes

Time Period	Tue	Wed	Thu				
	Mar 12	Mar 13	Mar 14				
0 - 1	3	2	4				
1 - 2	0	1	0				
2 - 3	1	1	0				
3 - 4	1	1	1				
4 - 5	3	0	1				
5 - 6	2	4	3				
6 - 7	10	12	5				
7 - 8	17	25	22				
8 - 9	41	44	26				
9 - 10	36	31	31				
10 - 11	25	26	22				
11 - 12	35	31	39				
12 - 13	42	38	45				
13 - 14	25	35	38				
14 - 15	45	42	51				
15 - 16	67	55	56				
16 - 17	47	59	67				
17 - 18	63	64	51				
18 - 19	45	51	36				
19 - 20	26	32	35				
20 - 21	30	30	37				
21 - 22	22	21	26				
22 - 23	9	16	8				
23 - 24	7	12	8				
<b>Day Total</b>	<b>602</b>	<b>633</b>	<b>612</b>				

## 15-Minute Volumes

Time Start	Tue	Wed	Thu				
	Mar 12	Mar 13	Mar 14				
0:00	1	0	1				
0:15	0	2	3				
0:30	1	0	0				
0:45	1	0	0				
1:00	0	0	0				
1:15	0	1	0				
1:30	0	0	0				
1:45	0	0	0				
2:00	0	0	0				
2:15	0	0	0				
2:30	1	1	0				
2:45	0	0	0				
3:00	0	1	1				
3:15	1	0	0				
3:30	0	0	0				
3:45	0	0	0				
4:00	0	0	0				
4:15	0	0	0				
4:30	1	0	0				
4:45	2	0	1				
5:00	0	1	0				
5:15	1	0	2				
5:30	1	2	1				
5:45	0	1	0				
6:00	4	2	1				
6:15	0	4	1				
6:30	1	3	1				
6:45	5	3	2				
7:00	2	5	2				
7:15	4	7	3				
7:30	5	6	8				
7:45	6	7	9				
8:00	7	8	9				
8:15	12	10	5				
8:30	11	13	7				
8:45	11	13	5				
9:00	10	9	10				
9:15	5	6	9				
9:30	10	9	4				
9:45	11	7	8				
10:00	8	3	5				
10:15	4	9	2				
10:30	5	8	9				
10:45	8	6	6				
11:00	11	11	9				
11:15	7	7	4				
11:30	6	9	12				
11:45	11	4	14				
12:00	12	11	14				
12:15	9	13	13				
12:30	10	9	6				
12:45	11	5	12				
13:00	10	4	6				
13:15	6	9	10				
13:30	4	12	12				
13:45	5	10	10				
14:00	8	5	12				
14:15	10	16	14				
14:30	15	13	13				
14:45	12	8	12				
15:00	26	19	10				
15:15	9	15	12				
15:30	13	12	15				
15:45	19	9	19				
16:00	11	15	15				
16:15	11	14	21				
16:30	12	20	13				
16:45	13	10	18				
17:00	24	18	11				
17:15	15	15	16				
17:30	14	20	12				
17:45	10	11	12				
18:00	11	10	11				
18:15	16	15	6				
18:30	13	13	15				
18:45	5	13	4				
19:00	10	10	6				
19:15	8	7	9				
19:30	4	6	10				
19:45	4	9	10				
20:00	5	9	13				
20:15	6	7	7				
20:30	10	8	11				
20:45	9	6	6				
21:00	9	7	9				
21:15	5	4	6				
21:30	4	2	8				
21:45	4	8	3				
22:00	2	5	3				
22:15	1	4	2				
22:30	4	6	2				
22:45	2	1	1				
23:00	2	5	2				
23:15	3	4	3				
23:30	1	1	3				
23:45	1	2	0				



Site notes:

# Lily Ave between Douglas St and Quadra St

Eastbound

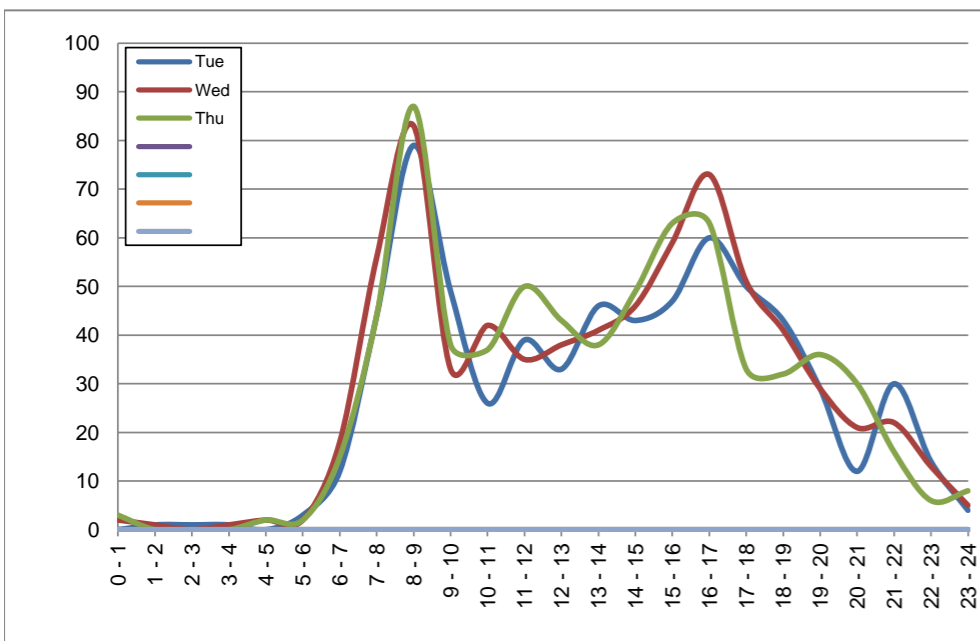
March 12, 2019 to March 14, 2019

## Hourly Volumes

Time Period	Tue	Wed	Thu				
	Mar 12	Mar 13	Mar 14				
0 - 1	0	2	3				
1 - 2	1	1	0				
2 - 3	1	0	0				
3 - 4	1	1	0				
4 - 5	0	2	2				
5 - 6	3	2	2				
6 - 7	12	18	15				
7 - 8	44	56	44				
8 - 9	79	83	87				
9 - 10	49	33	38				
10 - 11	26	42	37				
11 - 12	39	35	50				
12 - 13	33	38	43				
13 - 14	46	41	38				
14 - 15	43	46	49				
15 - 16	47	59	63				
16 - 17	60	73	63				
17 - 18	50	51	33				
18 - 19	43	41	32				
19 - 20	29	29	36				
20 - 21	12	21	30				
21 - 22	30	22	16				
22 - 23	14	13	6				
23 - 24	4	5	8				
<b>Day Total</b>	<b>666</b>	<b>714</b>	<b>695</b>				

## 15-Minute Volumes

Time Start	Tue	Wed	Thu				
	Mar 12	Mar 13	Mar 14				
0:00	0	0	0				
0:15	0	0	1				
0:30	0	0	0				
0:45	0	2	2				
1:00	1	0	0				
1:15	0	0	0				
1:30	0	1	0				
1:45	0	0	0				
2:00	0	0	0				
2:15	0	0	0				
2:30	0	0	0				
2:45	1	0	0				
3:00	0	1	0				
3:15	0	0	0				
3:30	0	0	0				
3:45	1	0	0				
4:00	0	1	0				
4:15	0	1	1				
4:30	0	0	0				
4:45	0	0	1				
5:00	0	0	0				
5:15	0	0	0				
5:30	2	1	1				
5:45	1	1	1				
6:00	2	1	1				
6:15	2	5	3				
6:30	4	5	5				
6:45	4	7	6				
7:00	11	11	7				
7:15	7	9	10				
7:30	11	12	10				
7:45	15	24	17				
8:00	26	24	23				
8:15	25	18	24				
8:30	22	21	24				
8:45	6	20	16				
9:00	16	12	12				
9:15	15	4	6				
9:30	7	10	10				
9:45	11	7	10				
10:00	4	8	9				
10:15	9	10	9				
10:30	6	11	9				
10:45	7	13	10				
11:00	14	6	8				
11:15	7	6	10				
11:30	9	14	13				
11:45	9	9	19				
12:00	7	9	13				
12:15	8	11	8				
12:30	10	8	13				
12:45	8	10	9				
13:00	11	11	7				
13:15	16	9	14				
13:30	13	11	13				
13:45	6	10	4				
14:00	8	12	9				
14:15	9	2	16				
14:30	11	12	9				
14:45	15	20	15				
15:00	19	16	9				
15:15	8	12	19				
15:30	7	15	18				
15:45	13	16	17				
16:00	16	13	12				
16:15	13	21	19				
16:30	15	23	14				
16:45	16	16	18				
17:00	12	9	11				
17:15	11	12	9				
17:30	15	14	8				
17:45	12	16	5				
18:00	11	14	6				
18:15	11	9	11				
18:30	11	13	6				
18:45	10	5	9				
19:00	6	9	8				
19:15	8	8	14				
19:30	7	6	8				
19:45	8	6	6				
20:00	2	7	5				
20:15	3	7	12				
20:30	2	4	7				
20:45	5	3	6				
21:00	5	9	5				
21:15	10	5	6				
21:30	7	1	3				
21:45	8	7	2				
22:00	5	2	1				
22:15	3	0	0				
22:30	3	9	3				
22:45	3	2	2				
23:00	1	2	3				
23:15	0	1	2				
23:30	1	1	2				
23:45	2	1	1				



Site notes:

# Vehicle Speed Summary

Saanich Engineering Department

Count Id: [C0041-01](#)

Filename: [Lily Ave between Douglas St and Quadra St-Mar-2019.xlsm](#)

**Location:** Lily Ave between Douglas St and Quadra St

Note: Douglas St and Quadra St

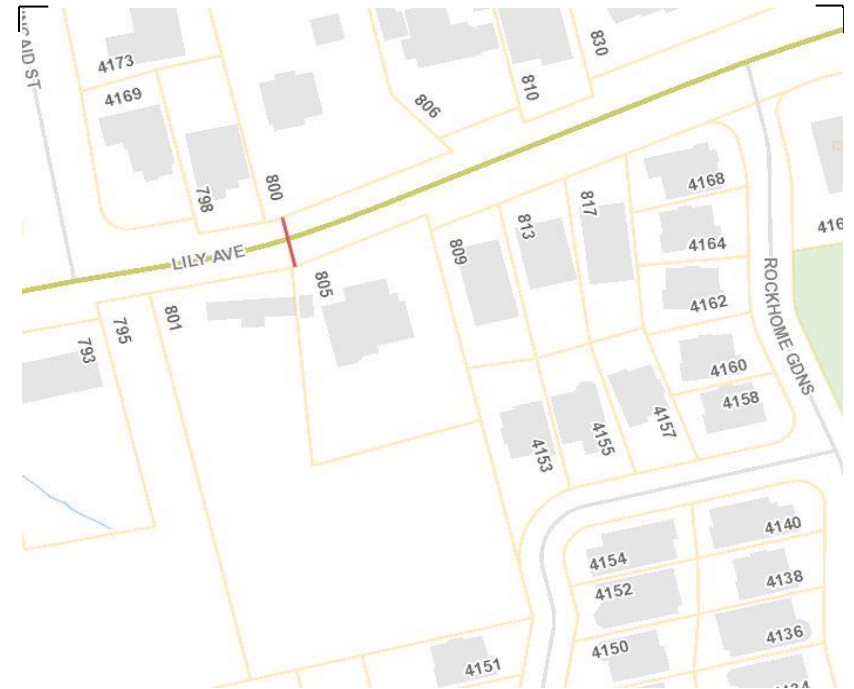
Direction: **East-West**

Dates: **March 11, 2019 To March 15, 2019**

*Filtered data*

AVG. SPEED	<b>18</b> mph	<b>30</b> km/h
50 % SPEED	<b>18</b> mph	<b>30</b> km/h
85 % SPEED	<b>22</b> mph	<b>36</b> km/h
95 % SPEED	<b>25</b> mph	<b>40</b> km/h

Location Map



Lily Ave between Douglas St and Quadra St

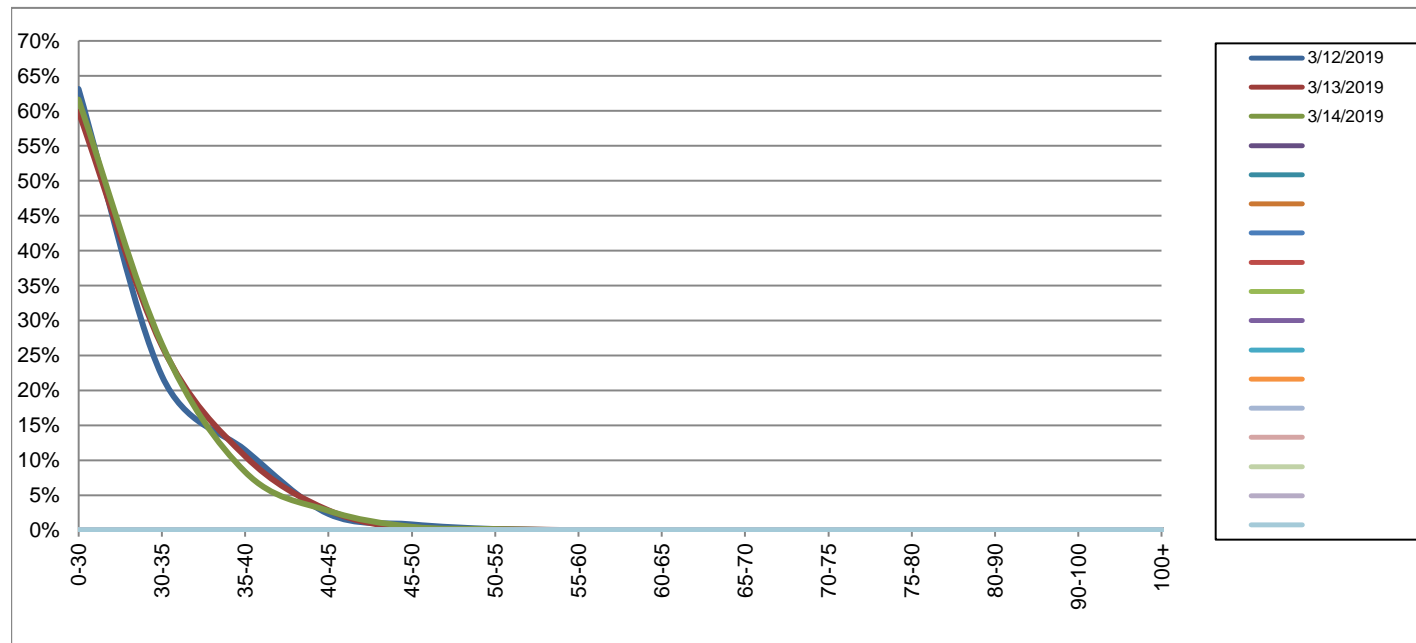
Westbound

March 12, 2019 to March 14, 2019

Daily Speed Bin Percentages															Daily Speed Bin Volumes														Total	Avg.
Bin #	1	2	3	4	5	6	7	8	9	10	11	12	13	14	1	2	3	4	5	6	7	8	9	10	11	12	13	14	Volume	Speed
Bin Speeds	0-30	30-35	35-40	40-45	45-50	50-55	55-60	60-65	65-70	70-75	75-80	80-90	90-100	100+	0-30	30-35	35-40	40-45	45-50	50-55	55-60	60-65	65-70	70-75	75-80	80-90	90-100	100+		
3/12/2019	63.1%	22.1%	11.5%	2.3%	0.8%	0.2%	0.0%	0.0%	0.0%	0.0%	0.0%	0.0%	0.0%	0.0%	380	133	69	14	5	1	0	0	0	0	0	0	0	0	602	22
3/13/2019	59.9%	26.4%	10.6%	2.8%	0.2%	0.2%	0.0%	0.0%	0.0%	0.0%	0.0%	0.0%	0.0%	0.0%	379	167	67	18	1	1	0	0	0	0	0	0	0	0	633	23
3/14/2019	61.6%	26.6%	8.3%	2.8%	0.5%	0.2%	0.0%	0.0%	0.0%	0.0%	0.0%	0.0%	0.0%	0.0%	377	163	51	17	3	1	0	0	0	0	0	0	0	0	612	23
<b>Total</b>	<b>61.5%</b>	<b>25.1%</b>	<b>10.1%</b>	<b>2.7%</b>	<b>0.5%</b>	<b>0.2%</b>	<b>0.0%</b>	<b>0.0%</b>	<b>0.0%</b>	<b>0.0%</b>	<b>0.0%</b>	<b>0.0%</b>	<b>0.0%</b>	<b>0.0%</b>	<b>1136</b>	<b>463</b>	<b>187</b>	<b>49</b>	<b>9</b>	<b>3</b>	<b>0</b>	<b>0</b>	<b>0</b>	<b>0</b>	<b>0</b>	<b>0</b>	<b>0</b>	<b>1847</b>	<b>23</b>	

Speed Data Summary

Bin #	1	2	3	4	5	6	7	8	9	10	11	12	13	14	Total
Bin Speeds	0-30	30-35	35-40	40-45	45-50	50-55	55-60	60-65	65-70	70-75	75-80	80-90	90-100	100+	
Survey Total	1136	463	187	49	9	3	0	0	0	0	0	0	0	0	1847
% Total	61.5%	25.1%	10.1%	2.7%	0.5%	0.2%	0.0%	0.0%	0.0%	0.0%	0.0%	0.0%	0.0%	0.0%	100%
Accumulated %	61.5%	86.6%	96.7%	99.4%	99.8%	100.0%	100.0%	100.0%	100.0%	100.0%	100.0%	100.0%	100.0%	100.0%	
Inverse Accum. %	38.5%	13.4%	3.3%	0.6%	0.2%	0.0%	0.0%	0.0%	0.0%	0.0%	0.0%	0.0%	0.0%	0.0%	
Average Speed	23 KM/H														



Site notes:

**Lily Ave between Douglas St and Quadra St**

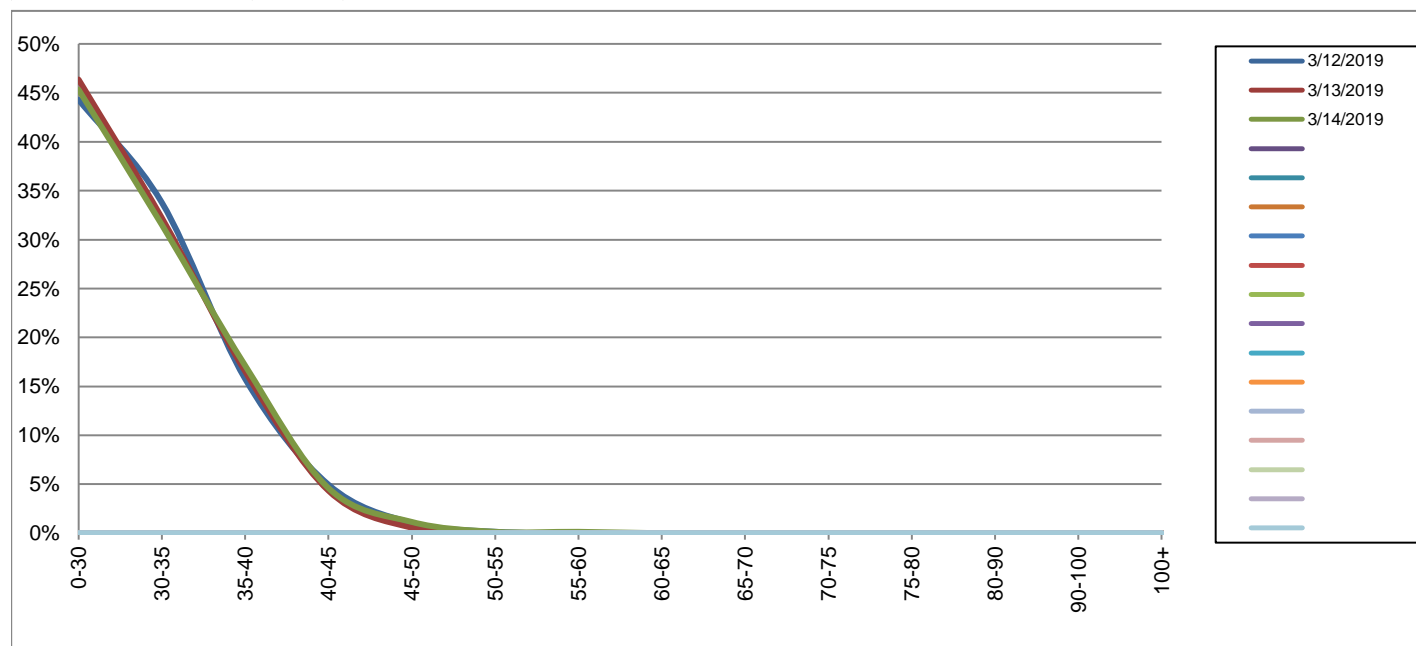
Eastbound

March 12, 2019 to March 14, 2019

Daily Speed Bin Percentages															Daily Speed Bin Volumes														Total	Avg.
Bin #	1	2	3	4	5	6	7	8	9	10	11	12	13	14	1	2	3	4	5	6	7	8	9	10	11	12	13	14	Volume	Speed
Bin Speeds	0-30	30-35	35-40	40-45	45-50	50-55	55-60	60-65	65-70	70-75	75-80	80-90	90-100	100+	0-30	30-35	35-40	40-45	45-50	50-55	55-60	60-65	65-70	70-75	75-80	80-90	90-100	100+		
3/12/2019	44.3%	33.8%	15.8%	5.0%	1.1%	0.2%	0.0%	0.0%	0.0%	0.0%	0.0%	0.0%	0.0%	0.0%	295	225	105	33	7	1	0	0	0	0	0	0	0	0	666	26
3/13/2019	46.4%	32.2%	16.5%	4.3%	0.6%	0.0%	0.0%	0.0%	0.0%	0.0%	0.0%	0.0%	0.0%	0.0%	331	230	118	31	4	0	0	0	0	0	0	0	0	0	714	26
3/14/2019	45.3%	31.5%	17.1%	4.6%	1.2%	0.1%	0.1%	0.0%	0.0%	0.0%	0.0%	0.0%	0.0%	0.0%	315	219	119	32	8	1	1	0	0	0	0	0	0	0	695	26
<b>Total</b>	45.3%	32.5%	16.5%	4.6%	0.9%	0.1%	0.0%	0.0%	0.0%	0.0%	0.0%	0.0%	0.0%	0.0%	941	674	342	96	19	2	1	0	0	0	0	0	0	0	2075	26

**Speed Data Summary**

Bin #	1	2	3	4	5	6	7	8	9	10	11	12	13	14	Total
Bin Speeds	0-30	30-35	35-40	40-45	45-50	50-55	55-60	60-65	65-70	70-75	75-80	80-90	90-100	100+	
Survey Total	941	674	342	96	19	2	1	0	0	0	0	0	0	0	2075
% Total	45.3%	32.5%	16.5%	4.6%	0.9%	0.1%	0.0%	0.0%	0.0%	0.0%	0.0%	0.0%	0.0%	0.0%	100%
Accumulated %	45.3%	77.8%	94.3%	98.9%	99.9%	100.0%	100.0%	100.0%	100.0%	100.0%	100.0%	100.0%	100.0%	100.0%	
Inverse Accum. %	54.7%	22.2%	5.7%	1.1%	0.1%	0.0%	0.0%	0.0%	0.0%	0.0%	0.0%	0.0%	0.0%	0.0%	
Average Speed	26 KM/H														



Site notes:

Lily Ave between Douglas St and Quadra St

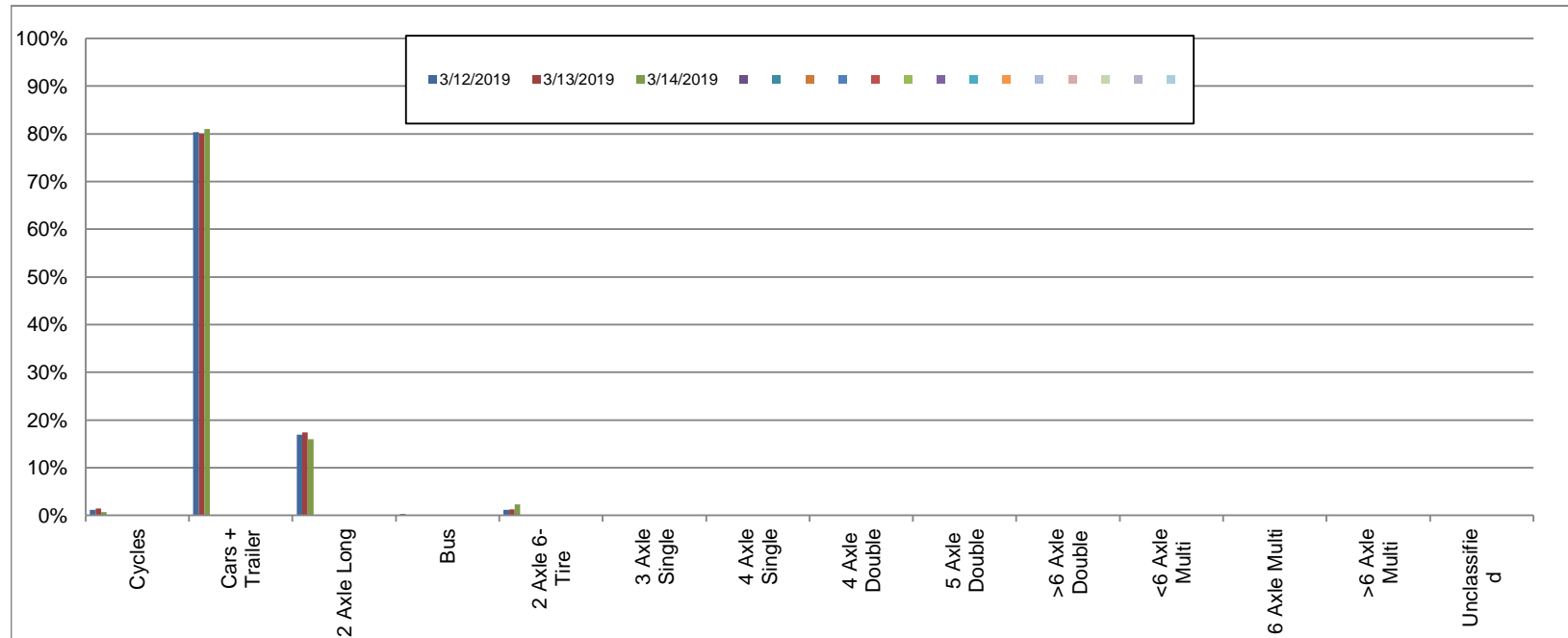
Westbound

March 12, 2019 to March 14, 2019

Daily Class Bin Percentages															Daily Class Bin Volumes														
Bin #	1	2	3	4	5	6	7	8	9	10	11	12	13	14	1	2	3	4	5	6	7	8	9	10	11	12	13	14	Total
Bin Class	Cycles	Cars + Trailer	2 Axle Long	Bus	2 Axle 6-Tire	3 Axle Single	4 Axle Single	4 Axle Double	5 Axle Double	>6 Axle Double	<6 Axle Multi	6 Axle Multi	>6 Axle Multi	Unclassified	Cycles	Cars + Trailer	2 Axle Long	Bus	2 Axle 6-Tire	3 Axle Single	4 Axle Single	4 Axle Double	5 Axle Double	>6 Axle Double	<6 Axle Multi	6 Axle Multi	>6 Axle Multi	Unclassified	Total Volume
3/12/2019	1.2%	80.4%	16.9%	0.3%	1.2%	0.0%	0.0%	0.0%	0.0%	0.0%	0.0%	0.0%	0.0%	0.0%	7	484	102	2	7	0	0	0	0	0	0	0	0	0	602
3/13/2019	1.4%	79.9%	17.4%	0.0%	1.3%	0.0%	0.0%	0.0%	0.0%	0.0%	0.0%	0.0%	0.0%	0.0%	9	506	110	0	8	0	0	0	0	0	0	0	0	0	633
3/14/2019	0.7%	81.0%	16.0%	0.0%	2.3%	0.0%	0.0%	0.0%	0.0%	0.0%	0.0%	0.0%	0.0%	0.0%	4	496	98	0	14	0	0	0	0	0	0	0	0	0	612
<b>Total</b>	<b>1.1%</b>	<b>80.5%</b>	<b>16.8%</b>	<b>0.1%</b>	<b>1.6%</b>	<b>0.0%</b>	<b>0.0%</b>	<b>0.0%</b>	<b>0.0%</b>	<b>0.0%</b>	<b>0.0%</b>	<b>0.0%</b>	<b>0.0%</b>	<b>0.0%</b>	<b>20</b>	<b>1486</b>	<b>310</b>	<b>2</b>	<b>29</b>	<b>0</b>	<b>0</b>	<b>0</b>	<b>0</b>	<b>0</b>	<b>0</b>	<b>0</b>	<b>0</b>	<b>0</b>	<b>1847</b>

Class Data Summary

Bin #	1	2	3	4	5	6	7	8	9	10	11	12	13	14	Total
Bin Class	Cycles	Cars + Trailer	2 Axle Long	Bus	2 Axle 6-Tire	3 Axle Single	4 Axle Single	4 Axle Double	5 Axle Double	>6 Axle Double	<6 Axle Multi	6 Axle Multi	>6 Axle Multi	Unclassified	Total Volume
<b>Survey Total</b>	20	1486	310	2	29	0	0	0	0	0	0	0	0	0	1847
<b>% Total</b>	1.1%	80.5%	16.8%	0.1%	1.6%	0.0%	0.0%	0.0%	0.0%	0.0%	0.0%	0.0%	0.0%	0.0%	100%
<b>Accumulated %</b>	1.1%	81.5%	98.3%	98.4%	100.0%	100.0%	100.0%	100.0%	100.0%	100.0%	100.0%	100.0%	100.0%	100.0%	
<b>Inv. Accum. %</b>	98.9%	18.5%	1.7%	1.6%	0.0%	0.0%	0.0%	0.0%	0.0%	0.0%	0.0%	0.0%	0.0%	0.0%	



Classification Descriptions

Bin #	Bin Description
1	Motorcycles
2	Passenger cars, including those with recreational trailers
3	2-axle pick-ups, vans, and RVs, including those with recreational trailers
4	Buses
5	2-axle, 6-tire single units
6	3-axle single units
7	4-axle single units
8	3-axle or 4-axle double unit
9	5-axle double unit
10	6-, 7-, or 8-axle double unit
11	5-axle multiple unit
12	6-axle multiple unit
13	7-or-more-axle multiple unit
14	Vehicles that could not be classified

Site notes:



Lily Ave between Douglas St and Quadra St

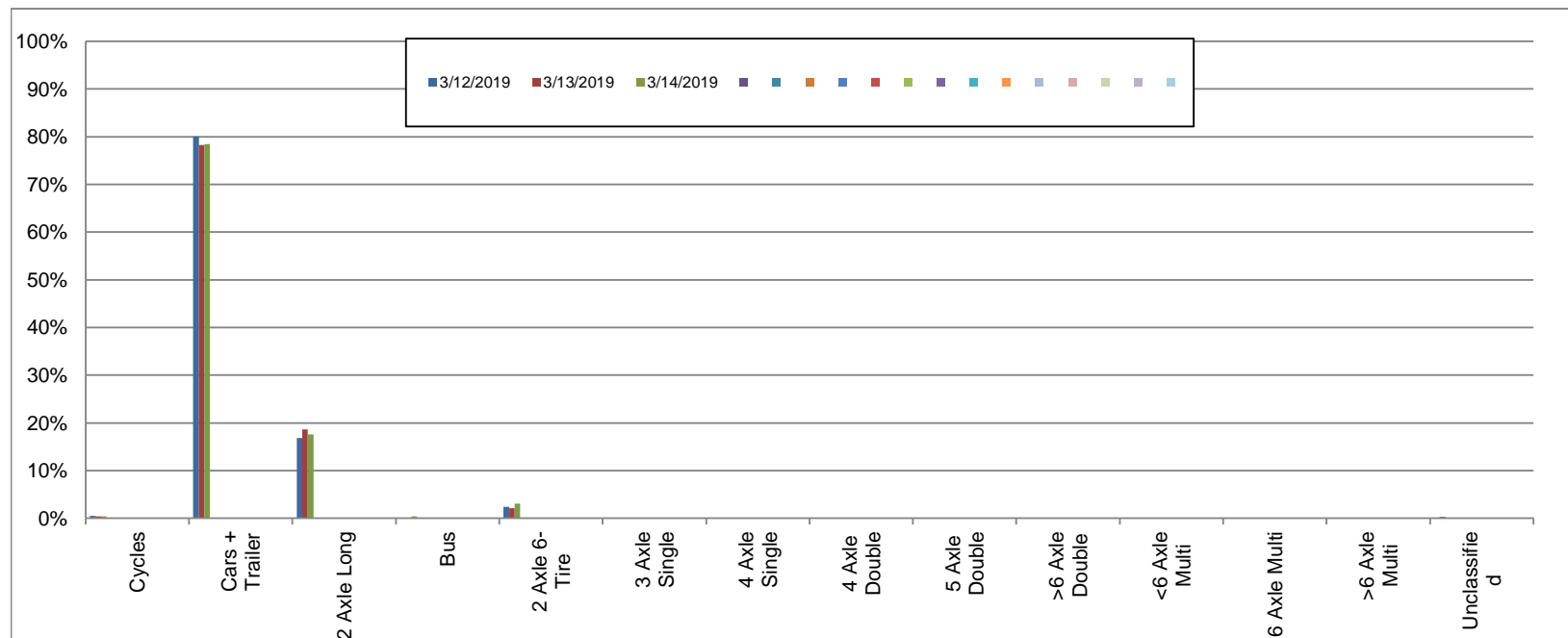
Eastbound

March 12, 2019 to March 14, 2019

Daily Class Bin Percentages															Daily Class Bin Volumes															
Bin #	1	2	3	4	5	6	7	8	9	10	11	12	13	14	1	2	3	4	5	6	7	8	9	10	11	12	13	14	Total Volume	
Bin Class	Cycles	Cars + Trailer	2 Axle Long	Bus	2 Axle 6-Tire	3 Axle Single	4 Axle Single	4 Axle Double	5 Axle Double	>6 Axle Double	<6 Axle Multi	6 Axle Multi	>6 Axle Multi	Unclassified	Cycles	Cars + Trailer	2 Axle Long	Bus	2 Axle 6-Tire	3 Axle Single	4 Axle Single	4 Axle Double	5 Axle Double	>6 Axle Double	<6 Axle Multi	6 Axle Multi	>6 Axle Multi	Unclassified		
3/12/2019	0.5%	80.0%	16.8%	0.2%	2.4%	0.0%	0.0%	0.0%	0.0%	0.0%	0.0%	0.0%	0.0%	0.2%	3	533	112	1	16	0	0	0	0	0	0	0	0	0	1	666
3/13/2019	0.4%	78.3%	18.6%	0.1%	2.1%	0.1%	0.0%	0.0%	0.0%	0.0%	0.0%	0.0%	0.0%	0.3%	3	559	133	1	15	1	0	0	0	0	0	0	0	0	2	714
3/14/2019	0.4%	78.4%	17.6%	0.4%	3.0%	0.0%	0.0%	0.1%	0.0%	0.0%	0.0%	0.0%	0.0%	0.0%	3	545	122	3	21	0	0	1	0	0	0	0	0	0	0	695
<b>Total</b>	0.4%	78.9%	17.7%	0.2%	2.5%	0.0%	0.0%	0.0%	0.0%	0.0%	0.0%	0.0%	0.0%	0.1%	9	1637	367	5	52	1	0	1	0	0	0	0	0	3	2075	

Class Data Summary

Bin #	1	2	3	4	5	6	7	8	9	10	11	12	13	14	Total Volume
Bin Class	Cycles	Cars + Trailer	2 Axle Long	Bus	2 Axle 6-Tire	3 Axle Single	4 Axle Single	4 Axle Double	5 Axle Double	>6 Axle Double	<6 Axle Multi	6 Axle Multi	>6 Axle Multi	Unclassified	Total Volume
Survey Total	9	1637	367	5	52	1	0	1	0	0	0	0	0	3	2075
% Total	0.4%	78.9%	17.7%	0.2%	2.5%	0.0%	0.0%	0.0%	0.0%	0.0%	0.0%	0.0%	0.0%	0.1%	100%
Accumulated %	0.4%	79.3%	97.0%	97.3%	99.8%	99.8%	99.8%	99.9%	99.9%	99.9%	99.9%	99.9%	99.9%	100.0%	
Inv. Accum. %	99.6%	20.7%	3.0%	2.7%	0.2%	0.2%	0.2%	0.1%	0.1%	0.1%	0.1%	0.1%	0.1%	0.0%	



Classification Descriptions

Bin #	Bin Description
1	Motorcycles
2	Passenger cars, including those with recreational trailers
3	2-axle pick-ups, vans, and RVs, including those with recreational trailers
4	Buses
5	2-axle, 6-tire single units
6	3-axle single units
7	4-axle single units
8	3-axle or 4-axle double unit
9	5-axle double unit
10	6-, 7-, or 8-axle double unit
11	5-axle multiple unit
12	6-axle multiple unit
13	7-or-more-axle multiple unit
14	Vehicles that could not be classified

Site notes: